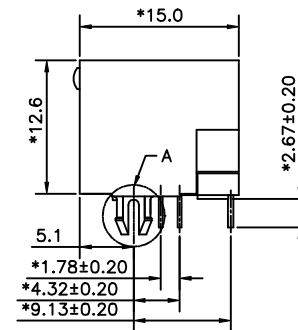
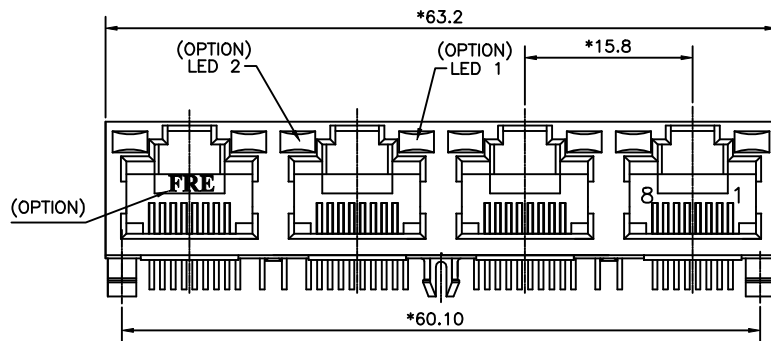
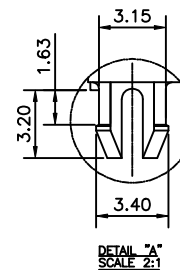
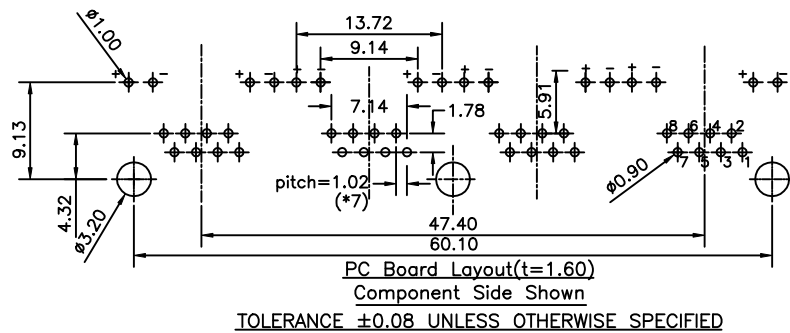


REVISION RECORD				
REV	ECO	DESCRIPTION	DRFT	CHKD



NOTES:

ELECTRICAL:

- VOLTAGE RATING : 125 VAC RMS.
- CURRENT RATING : 1.5 AMP.
- CONTACT RESISTANCE : 30 MILLIOHMS MAX.
- INSULATION RESISTANCE: 1000 MEGOHMS MIN @ 500 VDC.
- DIELECTRIC STRENGTH : 1000 VAC RMS 60Hz, 1MIN.
- LED RATINGS: FORWARD VOLTAGE: 2.2 VOLTS TYPICAL.
REVERSE VOLTAGE: 5 VOLTS MAXIMUM.
- OPERATING: 750 CYCLES MIN.

MECHANICAL:

- HOUSING MATERIAL : FR52 UL94V-0. COLOR-BLACK.
- INSERT MATERIAL : FR52 UL94V-0. COLOR-BLACK.
- BACK PLATE MATERIAL: FR52 COLOR-BLACK.
- LED SIZE : 3.2*2.0*7.0*P=2.54mm.
- CONTACT MATERIAL : PHOSPHOR BRONZE t=0.35 OR 0.46
- PLATING : GOLD PLATING OVER NICKEL.
- PCB RETENTION PRE-SOLDER : 1 LB MIN.
- PCB RETENTION POST-SOLDER: 10 LBS MIN.

ENVIRONMENTAL:

- STORAGE : -40°C TO +85°C.
- OPERATION: 0°C TO 70°C.
- WAVE SOLDERING TEMPERATURE: 255~265°C(5~10 SECONDS)
MATES WITH MODULAR PLUG CONFORMING TO
FCC PART 68, SUBPART F.
CUL FILE No:E163191

PART NUMBER: E5J88 - E 0 X 3 5 X - L

E-LED1: GREEN, LED2: RED

PLATING: 1-3u"
2-6u", 3-15u"
4-30u", 5-50u"

4-4 PORTS W/O MIDDLE POLE
C-4 PORTS W/ MIDDLE POLE

DETACHED LISTS	MM (INCH)	DFTO YANGLAN DATE 07/11/05
	TOLERANCES EXCEPT AS NOTED	CHKDJAKE DATE 2005/07/11
	MM ±	MFO DATE
	ANGLES ±	APPVLLUSHENG DATE 2005/07/11
THIRD ANGLE PROJECTION	FINISH :	QT'Y :
	SCALE : 2:1	

FULL RISE ELECTRONIC CO., LTD

TITLE		SIZE	REV
NO SHIELD LED JACK 4 PORTS		A3	0
DRAWING NO. GE5J3182-LA		/PART NO. SEE NOTE	
DO NOT SCALE DRAWING		SHEET 1	OF 1